



sanofi



ECTRIMS
EUROPEAN COMMITTEE FOR TREATMENT
AND RESEARCH IN MULTIPLE SCLEROSIS



HIGHLIGHTS

ECTRIMS 2024

A Sanofi event

Copenhagen | September 19th



MAT-ES-2402838-1.0 – 10/2024

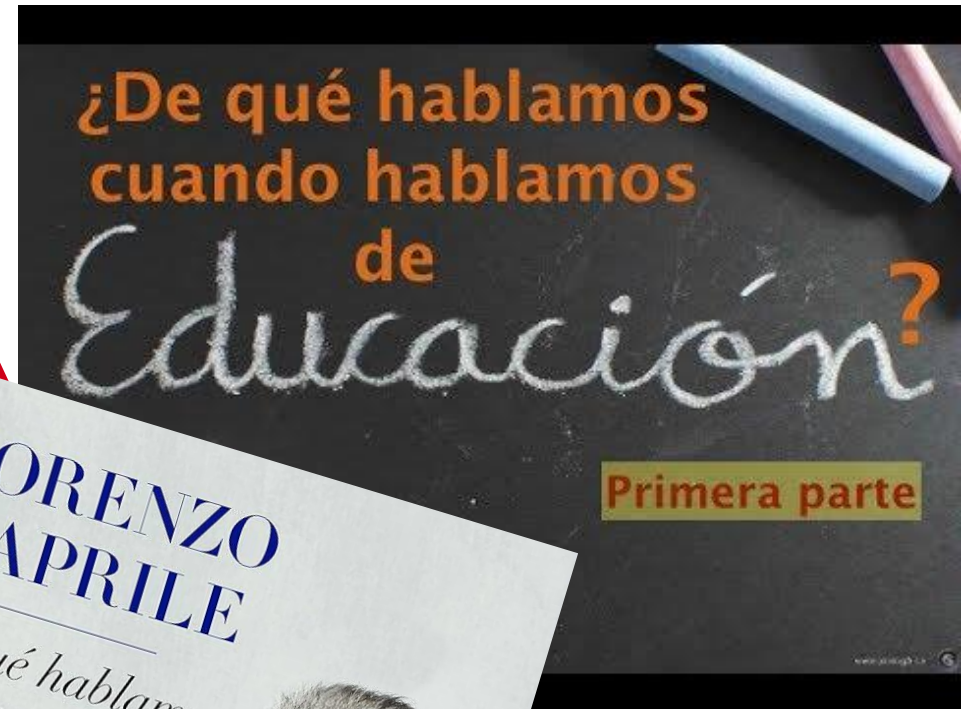
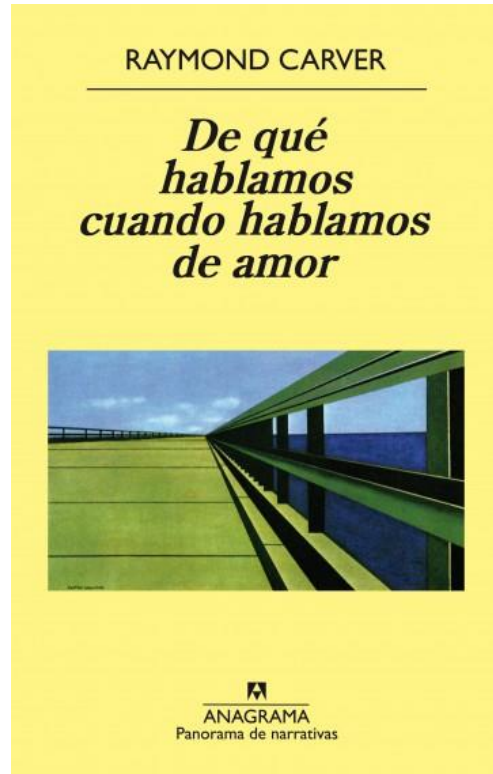
Smo(u)ldering - PIRA

JOSE MANUEL GARCIA DOMINGUEZ

*UD Enf Desmielinizantes HGU Gregorio Marañón
HM Hospitales
Madrid*



De qué hablamos cuando hablamos de...



Un problema de definición

CALs




PRLs,
SELS

PIRA

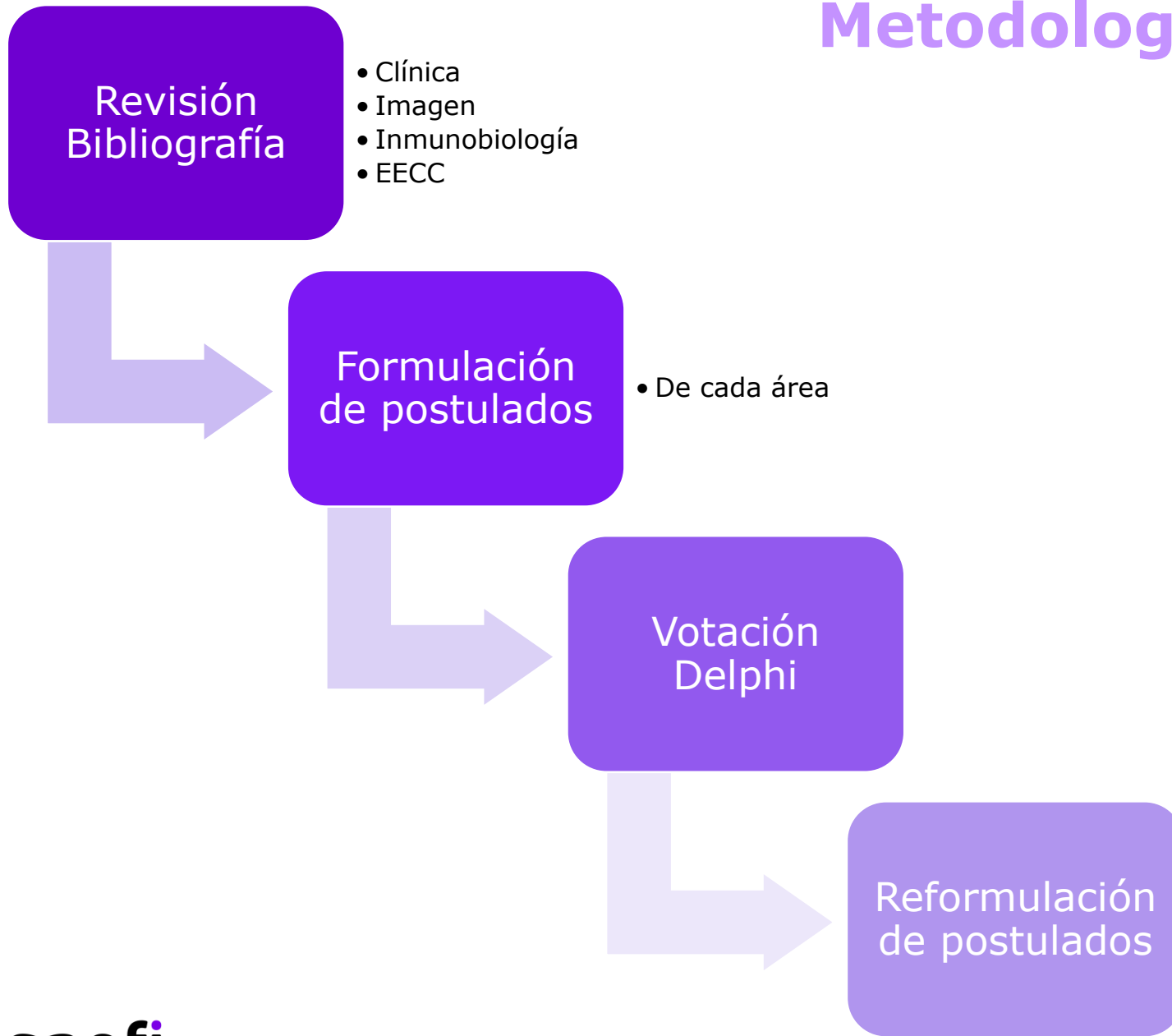
EMSP

Microglía

Smouldering-Associated Worsening in Multiple Sclerosis: An International Consensus Statement on Definition, Biology, Clinical Implications, and Future Directions

Antonio Scalfari, MD, PhD  ¹ Anthony Traboulsee, MD,² Jiwon Oh, MD, PhD,³
Laura Airas, MD, PhD ⁴ Stefan Bittner, MD ⁵ Massimiliano Calabrese, MD, PhD ⁶
Jose Manuel Garcia Dominguez, MD, PhD,⁷ Cristina Granziera, MD, PhD ^{8,9}
Benjamin Greenberg, MD, MHS,¹⁰ Kerstin Hellwig, MD ¹¹ Zsolt Illes, MD, PhD ¹²
Jan Lycke, MD, PhD,¹³ Veronica Popescu, MD,¹⁴ Francesca Bagnato, MD, PhD  ^{15,16}
and Gavin Giovannoni, MBBCh, PhD ¹⁷

Metodología



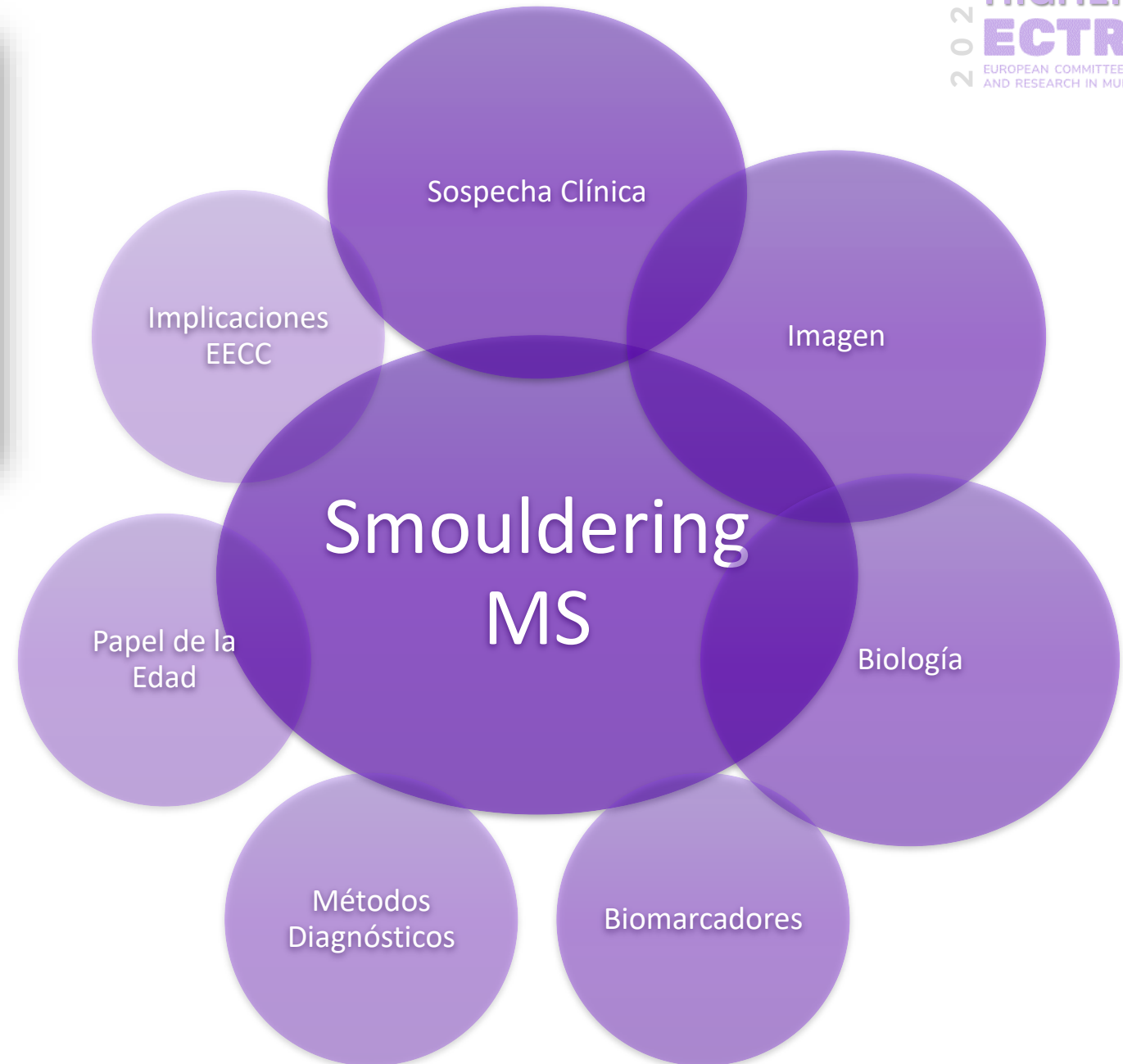
Definición

Smouldering disease in MS is an umbrella term characterizing chronic pathobiological processes occurring in the CNS, beyond acute inflammation, associated with neurodegeneration and may manifest clinically as physical worsening, functional deficits and cognitive decline

La enfermedad “*Smouldering*” es un concepto que engloba los procesos patobiológicos crónicos que ocurren en el SNC más allá de la inflamación aguda, asociado a neurodegeneración y que se puede manifestar clínicamente como empeoramiento físico, déficit funcionales y deterioro cognitivo

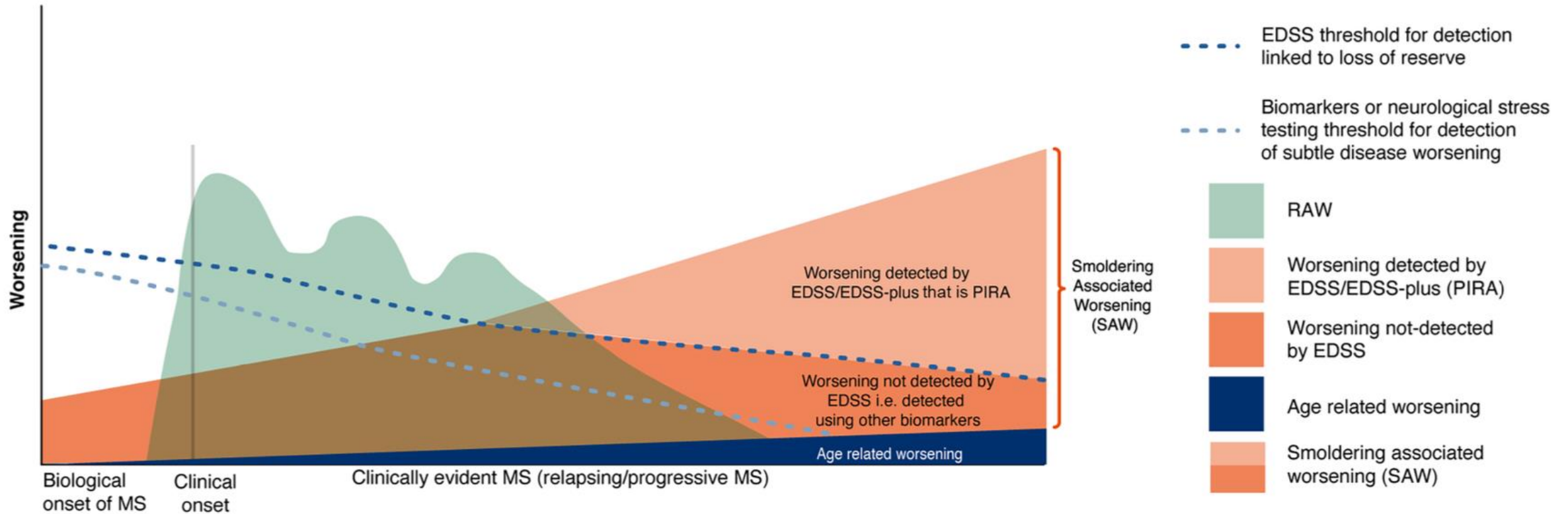
Smouldering-Associated Worsening in Multiple Sclerosis: An International Consensus Statement on Definition, Biology, Clinical Implications, and Future Directions

Antonio Scalfari, MD, PhD ¹ Anthony Traboulsee, MD,² Jiwon Oh, MD, PhD,³
Laura Airas, MD, PhD ⁴ Stefan Bittner, MD ⁵ Massimiliano Calabrese, MD, PhD ⁶
Jose Manuel Garcia Dominguez, MD, PhD,⁷ Cristina Granziera, MD, PhD ^{8,9}
Benjamin Greenberg, MD, MHS,¹⁰ Kerstin Hellwig, MD ¹¹ Zsolt Illes, MD, PhD ¹²
Jan Lycke, MD, PhD,¹³ Veronica Popescu, MD,¹⁴ Francesca Bagnato, MD, PhD ^{15,16}
and Gavin Giovannoni, MBBCh, PhD ¹⁷



EM Smouldering – Manifestaciones clínicas

Scafari et al: International Consensus on Smouldering MS



PIRA \neq Smouldering MS

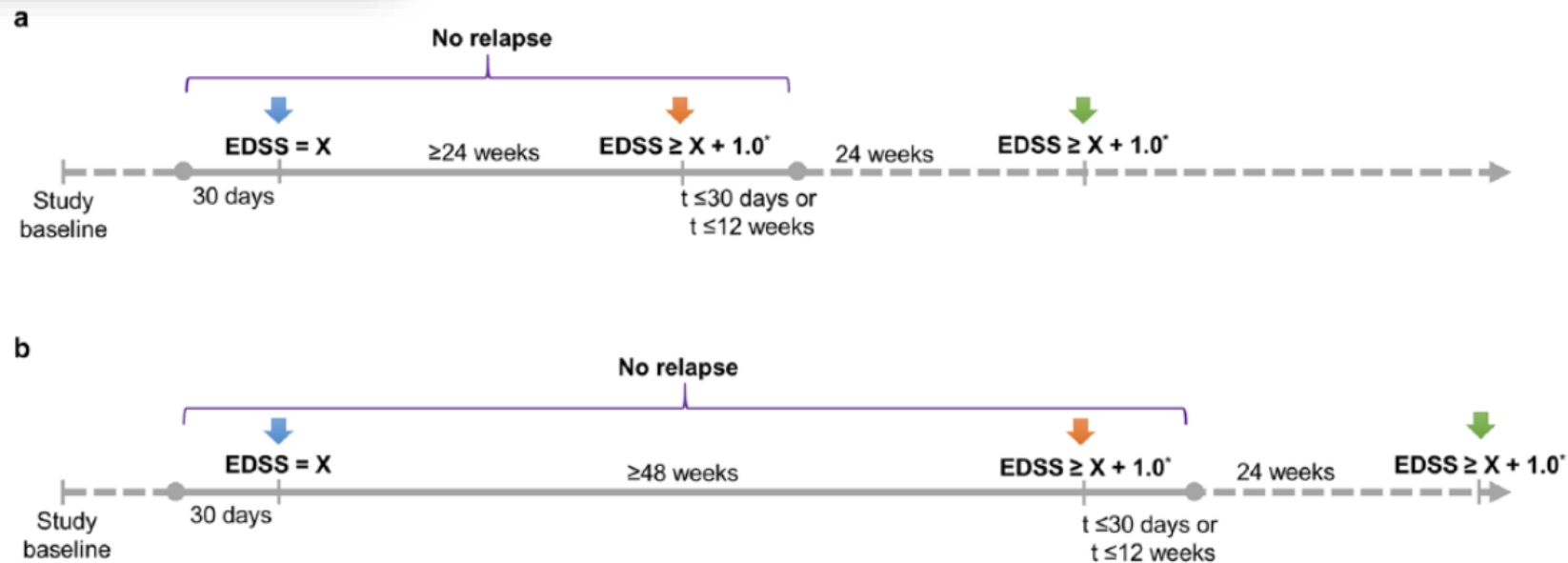
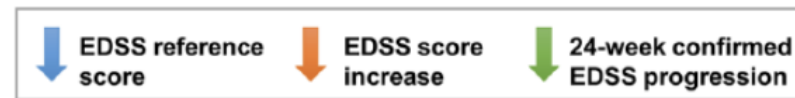
MULTIPLE SCLEROSIS JOURNAL MSJ

Original Research Paper

Greater sensitivity to multiple sclerosis disability worsening and progression events using a roving versus a fixed reference value in a prospective cohort study

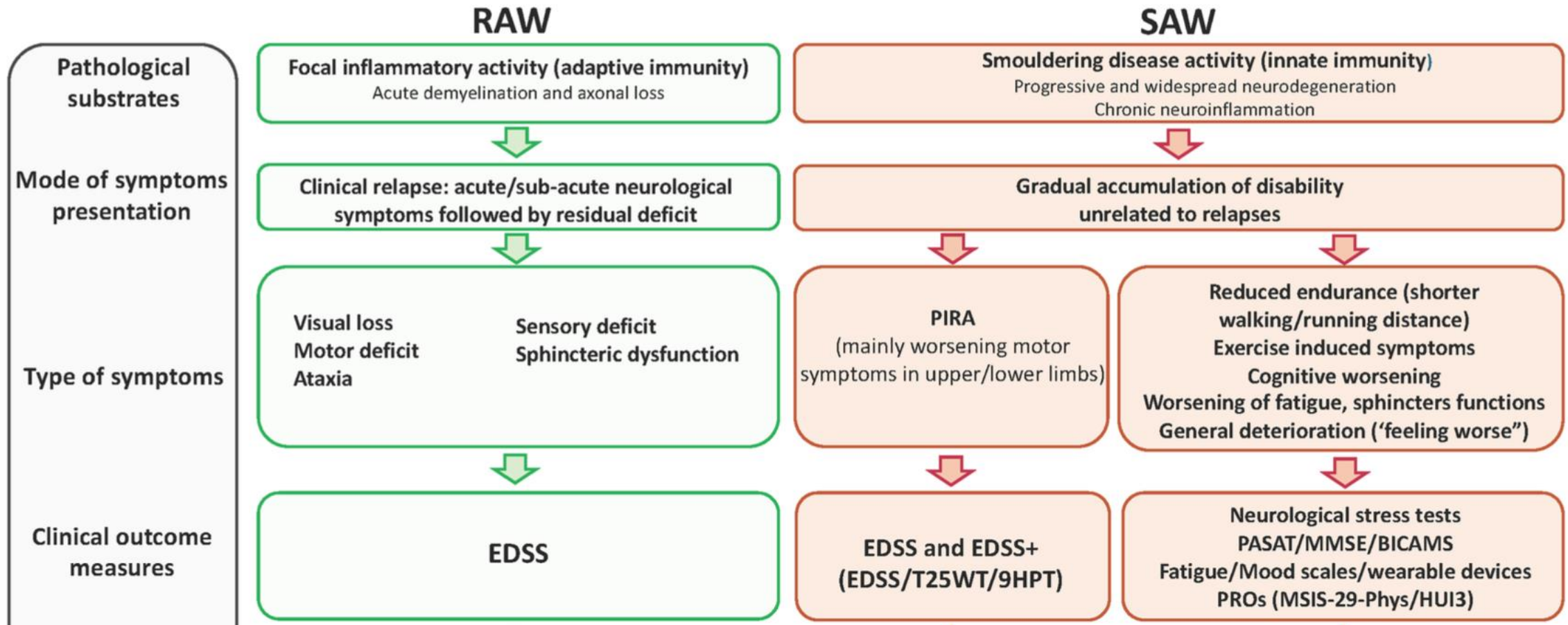
Multiple Sclerosis Journal
2018, Vol. 24(7) 963–973
DOI: 10.1177/1352458517709619
© The Author(s), 2017.
Reprints and permissions:
<http://www.sagepub.co.uk/journalsPermissions.nav>

Ludwig Kappos, Helmut Butzkueven, Heinz Wiendl, Timothy Spelman, Fabio Pellegrini, Yi Chen, Qunming Dong, Harold Koendgen, Shibeshih Belachew and Maria Trojano; On Behalf of the Tysabri® Observational Program (TOP) Investigators



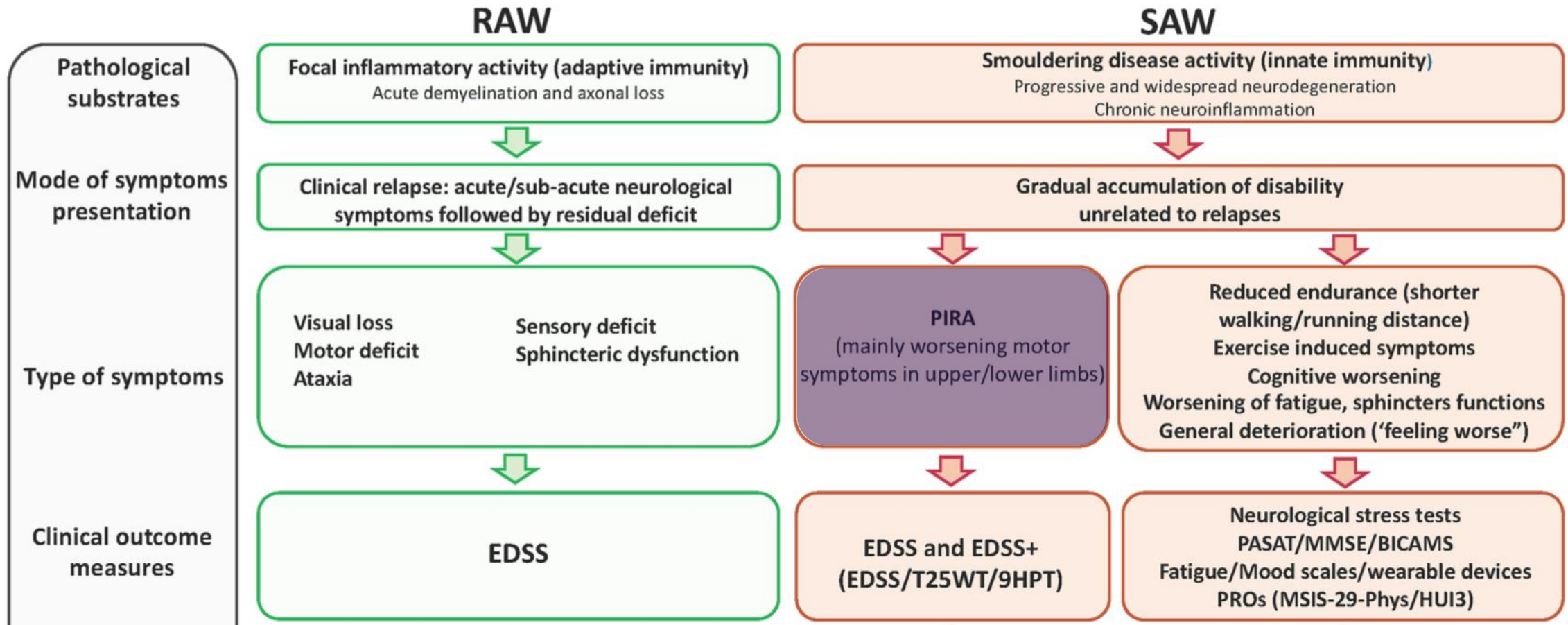
EM Smouldering – Manifestaciones clínicas

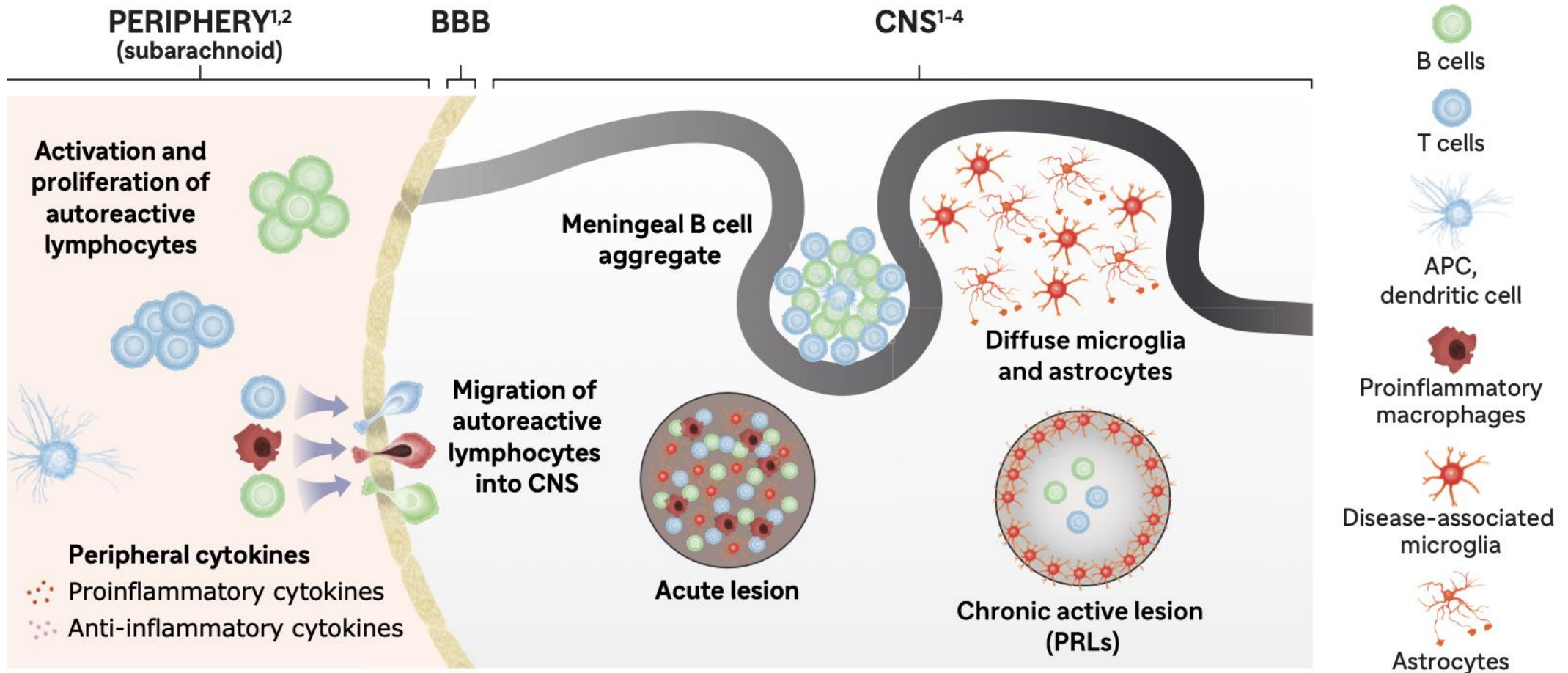
Conceptos RAW y SAW



EM Smouldering – Manifestaciones clínicas

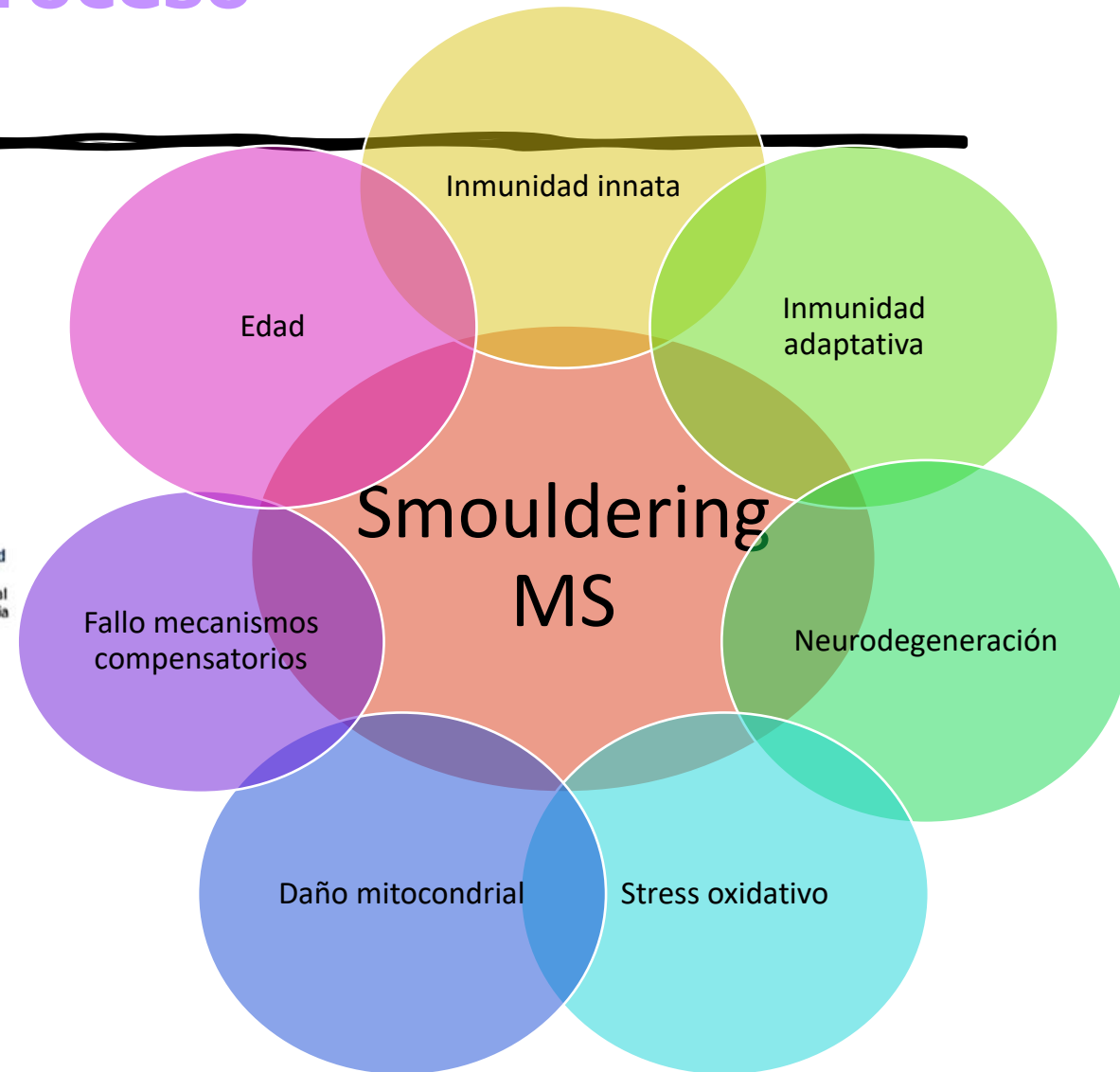
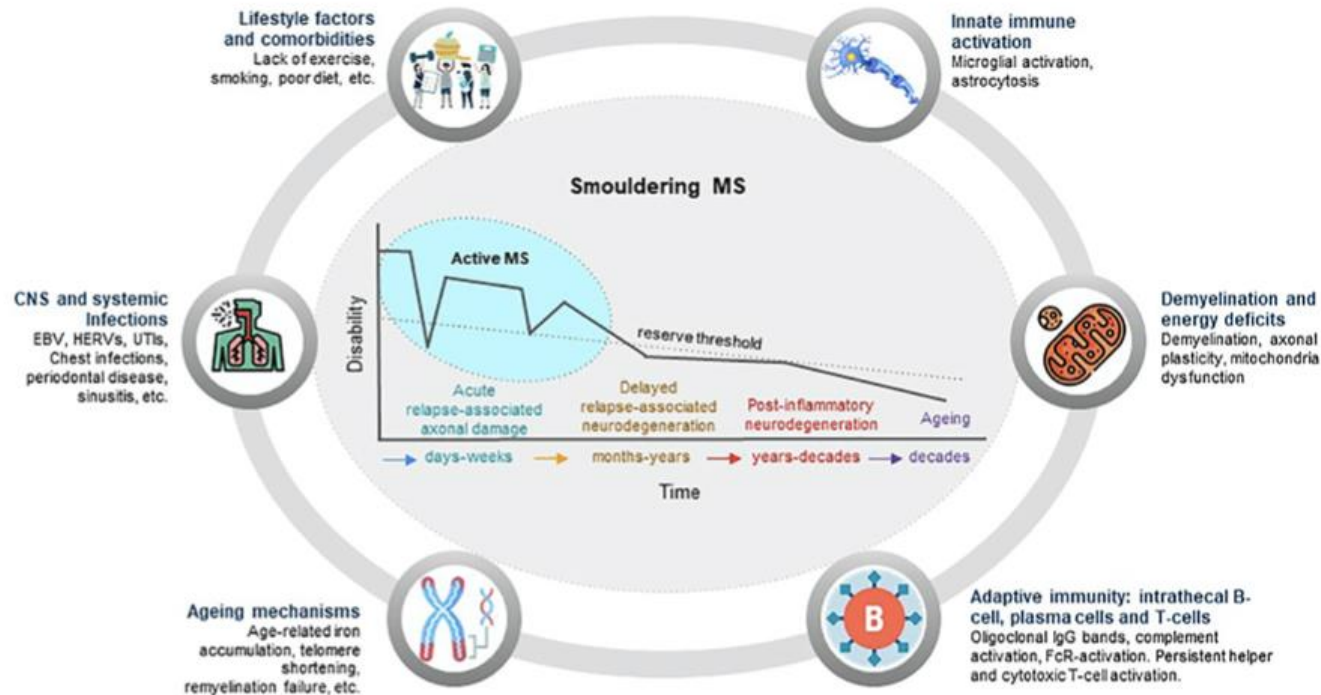
Conceptos RAW y SAW

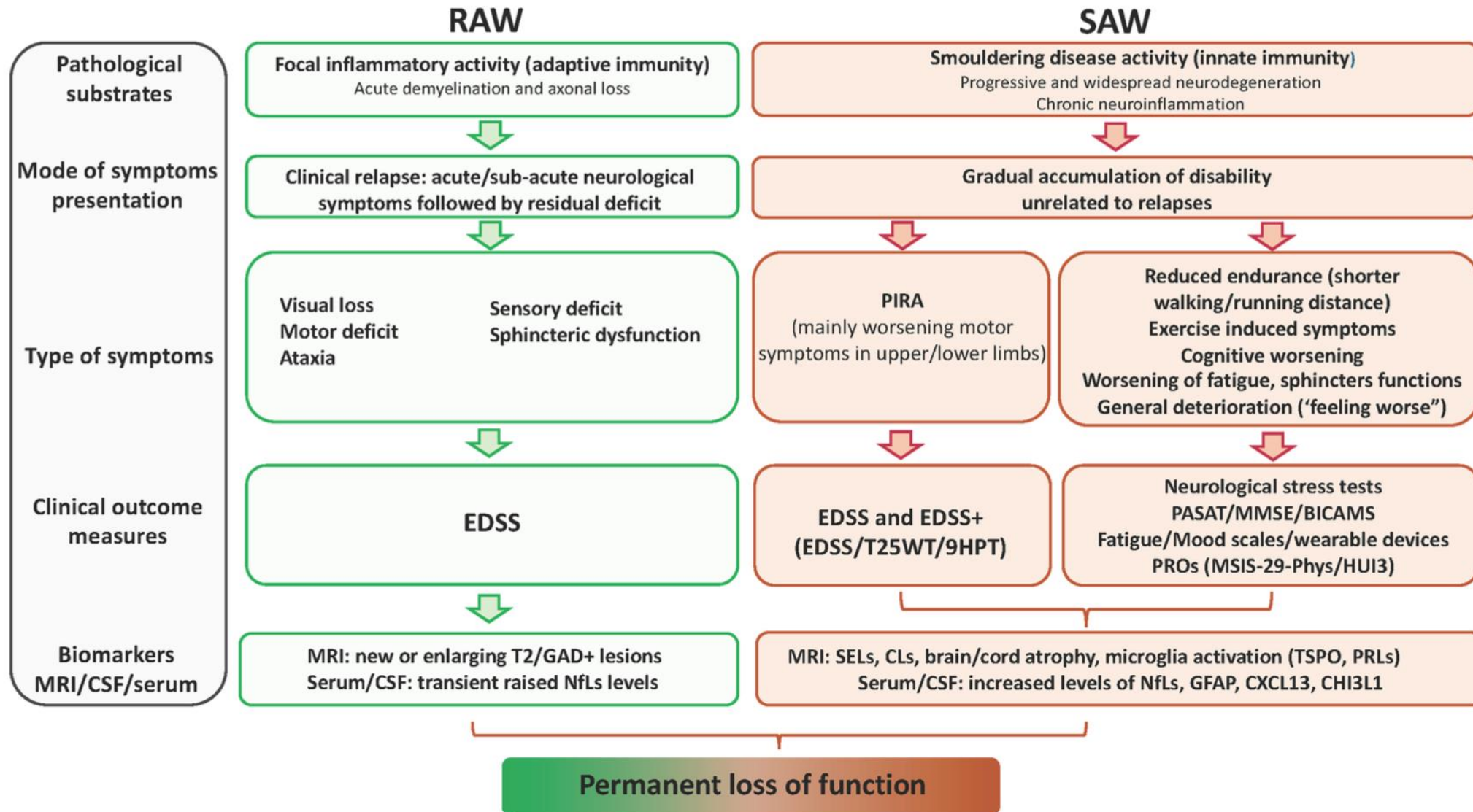




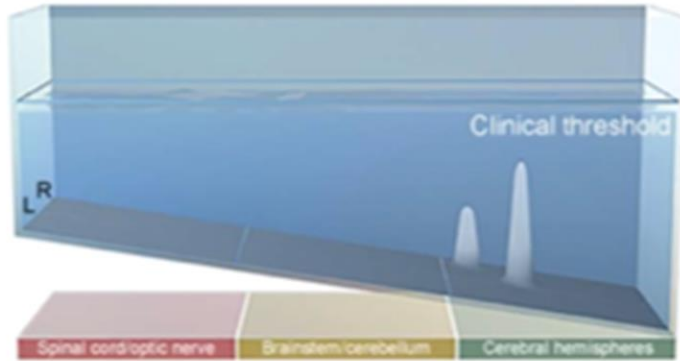
Emerging evidence suggests that microglia play a key role in smoldering disease, acting as a primary driver of disability accumulation in MS^{1,4}

La EM Smouldering no es un proceso patológico ÚNICO

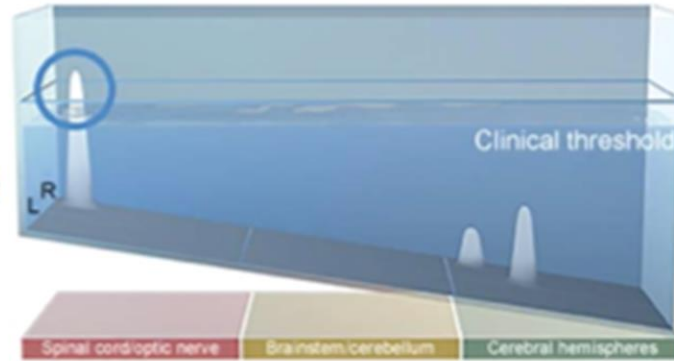




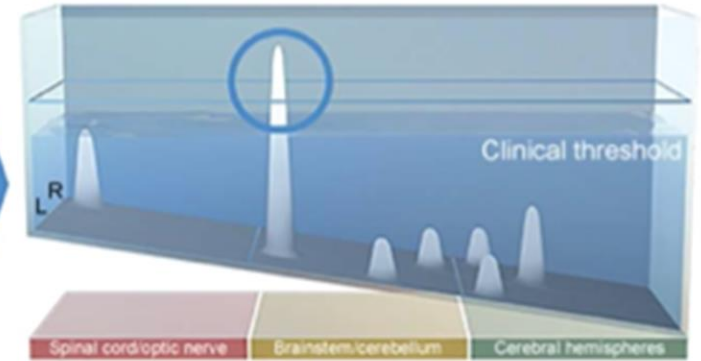
A. RIS



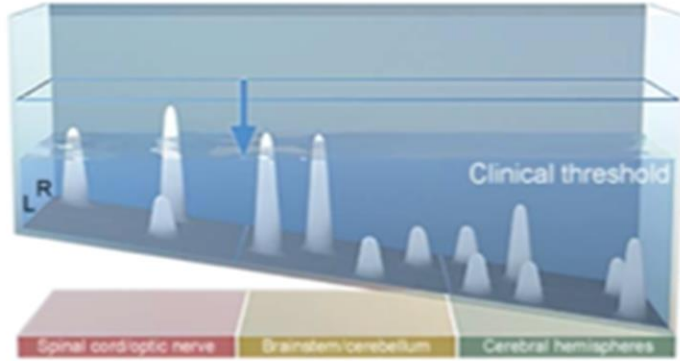
B. CIS



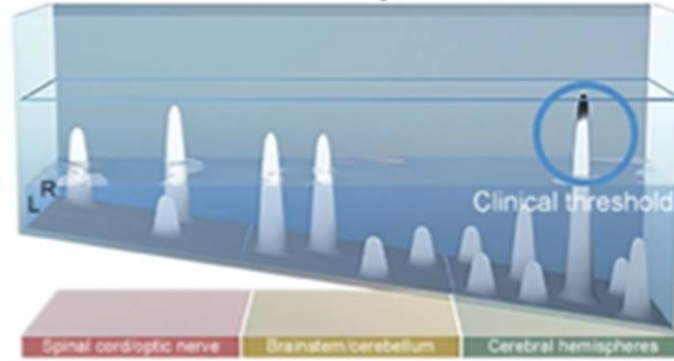
C. RRMS



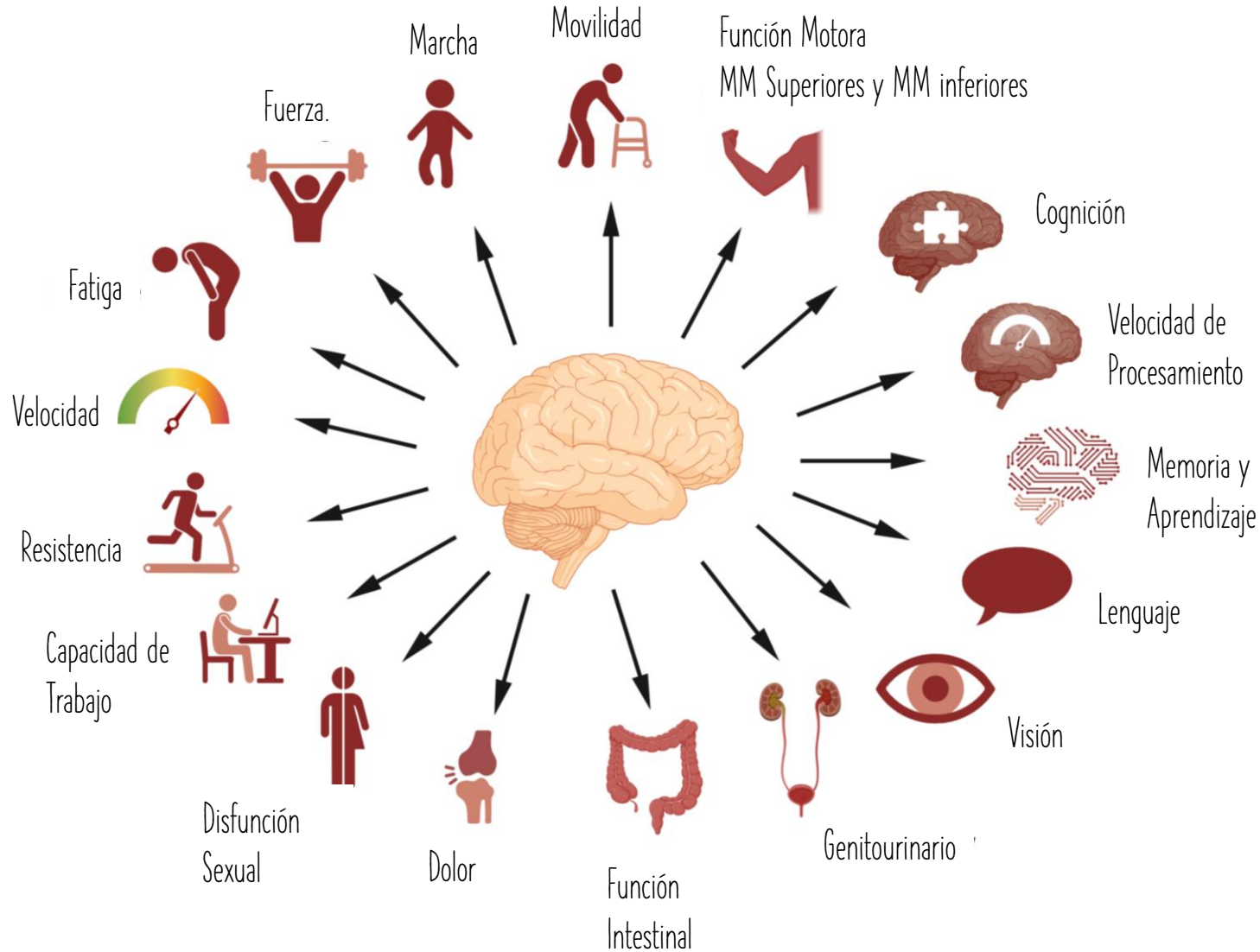
D. SPMS



E. SPMS with activity

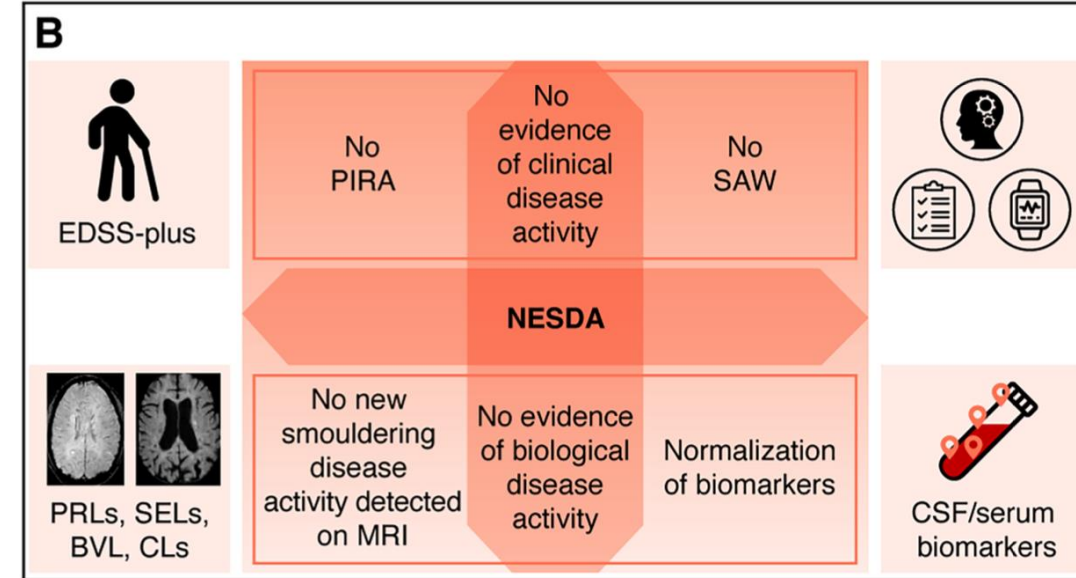
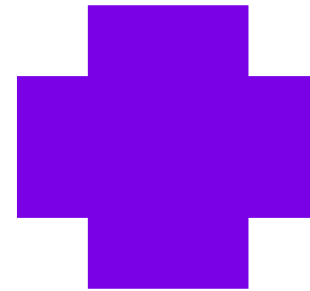
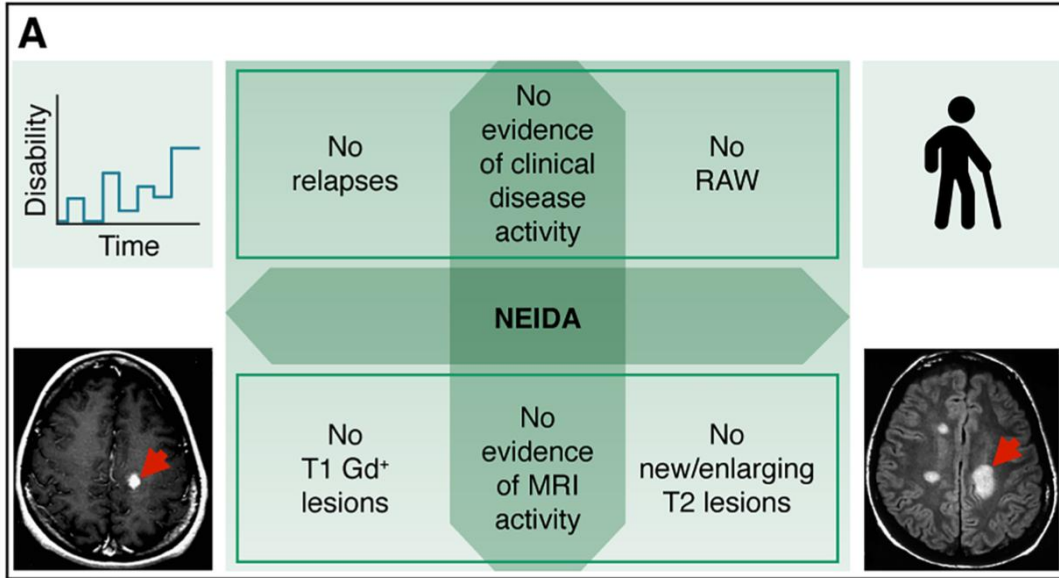


- Spinal cord/
optic nerve
- Brainstem/
cerebellum
- Cerebral
hemispheres



La EM Smouldering tiene múltiples manifestaciones clínicas

Objetivo terapéutico en este escenario



Fármacos Actuales



Fármacos Actuales

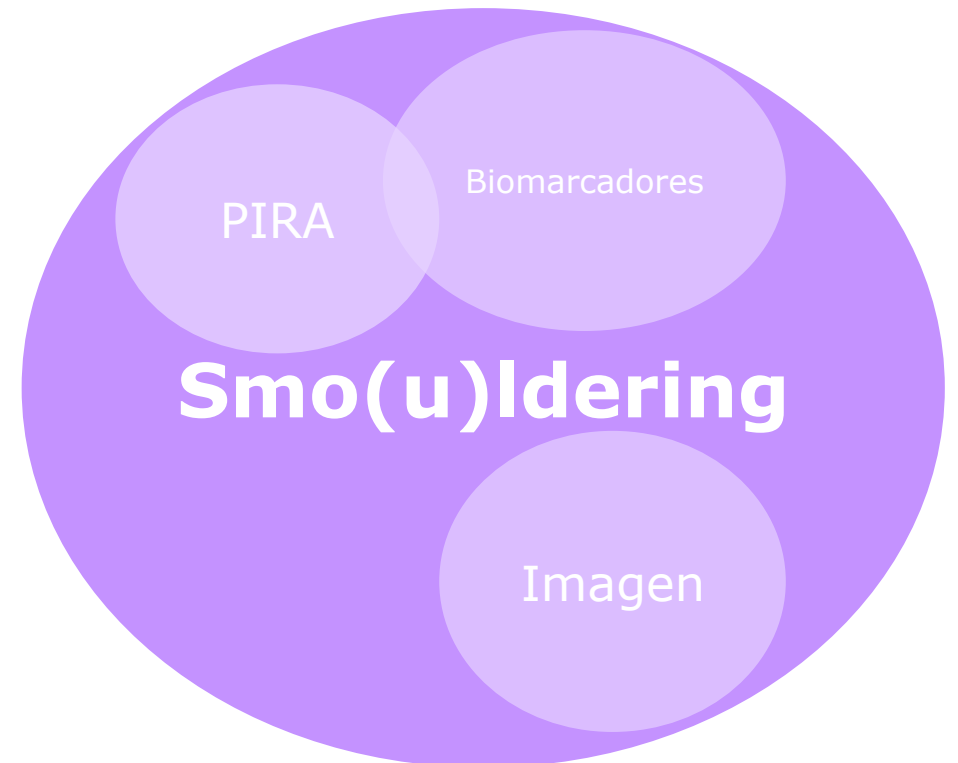
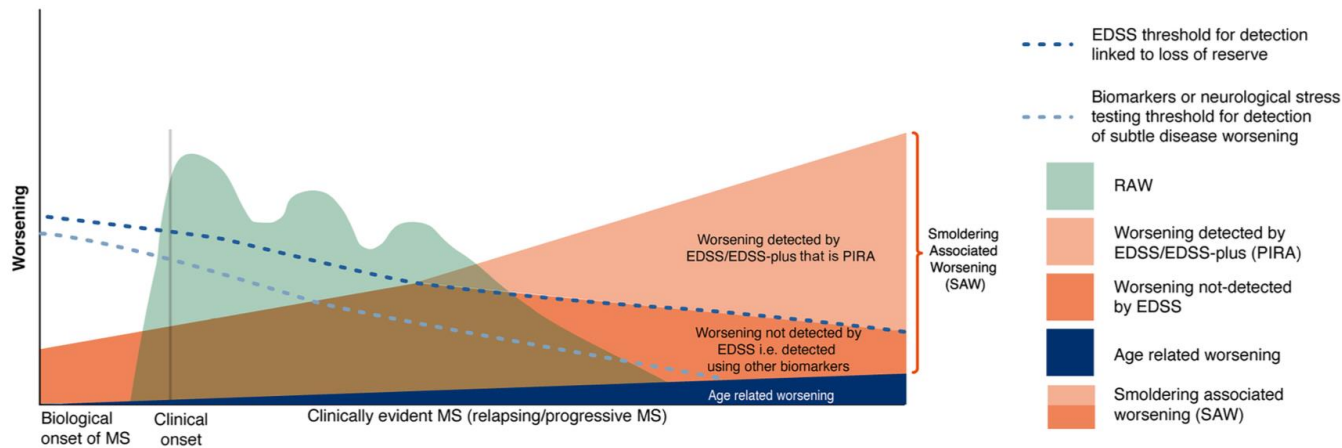


Objetivo Futuro

Conclusiones

La enfermedad “*Smouldering*” es un concepto que engloba los procesos patobiológicos crónicos que ocurren en el SNC más allá de la inflamación aguda, asociado a neurodegeneración y que se puede manifestar clínicamente como empeoramiento físico, déficit funcionales y deterioro cognitivo

Scafari et al: International Consensus on Smouldering MS



Muchas *gracias!*

Tiempo de debate

